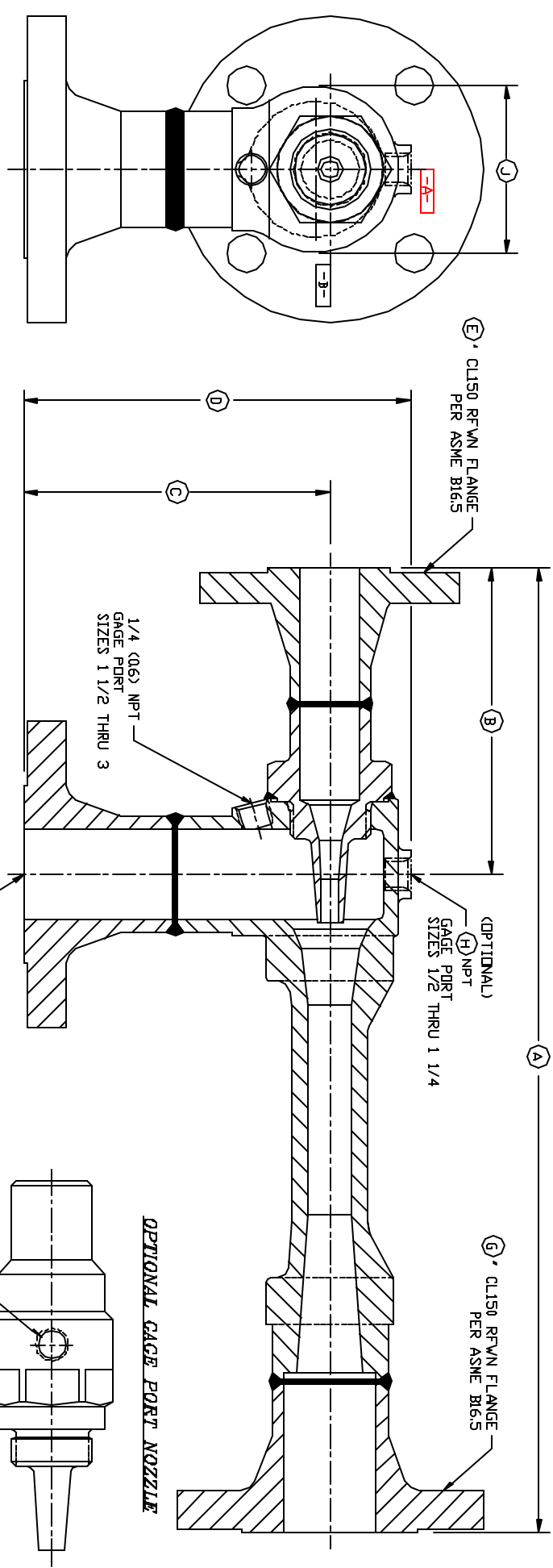


MATERIAL: SEE B/M
 DRAWN: FWK CHECKED:
 SCALE: NONE DATE: 04/16/08

CLARK-RELIANCE CORP.
 STRONGSVILLE, OHIO, U.S.A.

ASSEMBLY EDUCATORS
 STANDARD WN FLANGE CONNECTIONS

Section: E400
 Bulletin: E400 02
 Date: 4/16/08
 Supersedes: NEW
 FILE NO.: E400-02.DWG



STANDARD CAST UNIT

MODEL	SIZE	INCHES (mm)										NOZZLE GAGE PORT ANGLE POSITION			
		W/STANDARD NOZZLE	A	W/GAGE PORT NOZZLE	B	W/GAGE PORT NOZZLE	C	D	E	F	G		H	I	J
SL	1/2	8.375 (212.7)	9.875 (250.8)	3.582 (90.4)	5.082 (128.5)	3.188 (81.0)	3.938 (100.0)	1/2 (12.7)	1/2 (12.7)	1/2 (12.7)	1/2 (31.1)	1/8 (3.1)	1/8 (3.1)	1.250 (31.8)	B
SL	3/4	8.838 (225.4)	11.838 (303.2)	3.938 (100.0)	5.888 (144.4)	3.625 (92.0)	4.500 (114.3)	1/2 (12.7)	3/4 (19.0)	3/4 (19.0)	1/4 (6.3)	1/4 (6.3)	1.500 (38.1)	B	
ML.HL.SG.HC.ML.HL.MLE	1	11.312 (287.3)	13.312 (338.1)	4.188 (106.3)	6.188 (157.1)	4.000 (101.6)	5.000 (127.0)	1/2 (12.7)	3/4 (19.0)	3/4 (19.0)	1 (25.4)	1/4 (6.3)	1.750 (44.4)	B	
SL	1 1/4	13.438 (341.3)	13.808 (350.4)	4.828 (117.4)	6.878 (174.8)	4.582 (115.9)	5.688 (144.4)	1/2 (12.7)	1 (25.4)	1 (25.4)	1/4 (6.3)	1/4 (6.3)	2.250 (57.1)	B	
ML.HL.SG.HC.ML.HL.MLE	1 1/2	15.750 (400.0)	18.250 (463.6)	4.750 (120.7)	7.000 (177.8)	5.000 (127.0)	6.188 (157.1)	1 (25.4)	1 1/4 (31.8)	1 1/4 (31.8)	1/4 (6.3)	1/4 (6.3)	2.750 (69.9)	A	
SL.ML.SG.HC.ML.HL.MLE	2	18.250 (463.6)	22.250 (565.1)	5.438 (138.1)	8.438 (214.3)	5.582 (141.2)	7.000 (177.8)	1 1/4 (31.8)	2 (50.8)	2 (50.8)	1/4 (6.3)	1/4 (6.3)	3.582 (90.4)	A	
SL.ML.SG.HC.ML.HL.MLE	2 1/2	23.438 (595.3)	26.938 (684.2)	6.000 (152.4)	9.500 (241.3)	6.838 (174.2)	8.812 (223.8)	2 (50.8)	2 1/2 (63.5)	2 1/2 (63.5)	1/4 (6.3)	1/4 (6.3)	4.750 (120.7)	A	
SL.ML.HL.SG.HC.ML.HL.MLE	3	29.250 (742.9)	33.250 (844.8)	6.582 (168.7)	10.582 (268.2)	7.812 (198.4)	10.125 (257.1)	2 (50.8)	3 (76.2)	3 (76.2)	1/4 (6.3)	1/4 (6.3)	8.082 (154.8)	A	

* UN 15 1/8